
Product Datasheet

Smad7 antibody (orb11386)

Description

Smad7 antibody

Species/Host

Rabbit

Reactivity

Human, Mouse, Porcine, Rat

Conjugation

Unconjugated

Tested Applications

ELISA, IHC-P, WB

Immunogen

KLH conjugated synthetic peptide derived from human Smad7. Please contact us for the exact immunogen sequence. The peptide is available as orb374748.

Target

Smad7

Form/Appearance

10 mM PBS, 0.02% sodium azide

Concentration

- 100 µg (in 200 µl): 0.5 mg/ml- 200 µg (in 400 µl): 0.5 mg/ml

Storage

Store at 4°C for up to two weeks. For long term storage, aliquot and store at -20°C, avoid freeze/thaw cycles.

Note

For research use only

Isotype

IgG

Clonality

Polyclonal

Purity

Polyclonal antibodies are purified by peptide affinity chromatography

MW

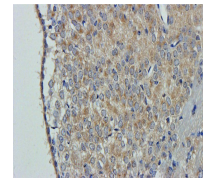
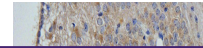
46 kDa

Uniprot ID
[O35253](#), [O88406](#), [O15105](#)
Entrez
[4092](#)
Dilution Range

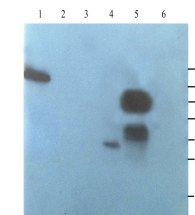
IHC-P: 1:100-600, WB: 1:100-800 (based on 0.5mg/ml)

Expiration Date

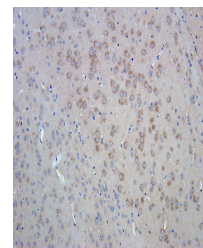
12 months from date of receipt.



IHC-P image of mouse brain tissue using ...



Western blot analysis of rat brain (lane...)



Immunohistochemical staining of paraffin...