
Product Datasheet

SEMA3A antibody (orb11359)

Description

SEMA3A antibody

Species/Host

Rabbit

Reactivity

Human, Mouse, Rat

Conjugation

Unconjugated

Tested Applications

ICC, IF, IHC-P, WB

Immunogen

KLH conjugated synthetic peptide derived from human SEMA3A. Please contact us for the exact immunogen sequence. The peptide is available as orb374747.

Target

SEMA3A

Form/Appearance

10 mM PBS, 0.02% sodium azide

Concentration

- 100 µg (in 200 µl): 0.5 mg/ml- 200 µg (in 400 µl): 0.5 mg/ml

Storage

Store at 4°C for up to two weeks. For long term storage, aliquot and store at -20°C, avoid freeze/thaw cycles.

Note

For research use only

Isotype

IgG

Clonality

Polyclonal

Purity

Polyclonal antibodies are purified by peptide affinity chromatography

MW

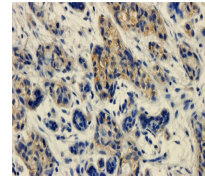
89 kDa

Uniprot ID
[O08665](#), [Q14563](#), [Q63548](#)
NCBI
[11](#), [006071](#), [21](#), [006080](#)
Entrez
[10371](#)
Dilution Range

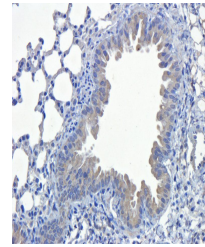
WB: 1:100-800, IHC-P: 1: 100-500

Expiration Date

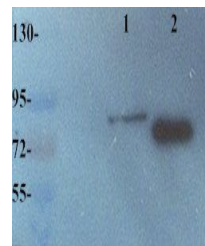
12 months from date of receipt.



Immunohistochemical staining of paraffin...



IHC-P image of mouse lung tissue using a...



WB analysis of Mouse lung (Lane 1), Mous...