
Product Datasheet

CXCL14 antibody (orb11354)

Description

CXCL14 antibody

Species/Host

Rabbit

Reactivity

Human, Mouse, Rat

Conjugation

Unconjugated

Tested

ELISA, IHC-P, WB

Applications
Immunogen

KLH conjugated synthetic peptide derived from human CXCL14. Please contact us for the exact immunogen sequence. The peptide is available as orb374746.

Target

CXCL14

Form/Appearance

10 mM PBS, 0.02% sodium azide

Concentration

- 100 µg (in 200 µl): 0.5 mg/ml- 200 µg (in 400 µl): 0.5 mg/ml

Storage

Store at 4°C for up to two weeks. For long term storage, aliquot and store at -20°C, avoid freeze/thaw cycles.

Note

For research use only

Isotype

IgG

Clonality

Polyclonal

Purity

Polyclonal antibodies are purified by peptide affinity chromatography

MW

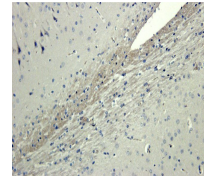
13 kDa

Uniprot ID
[O95715](#)
Entrez
[9547](#)
Dilution Range

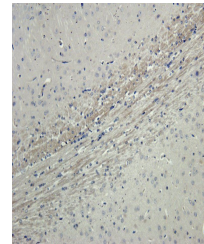
WB: 1:100-2000, IHC-P: 1:50-300 (based on 0.5 mg/ml)

Expiration Date

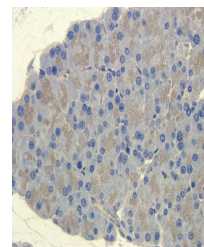
12 months from date of receipt.



Immunohistochemical staining of rat brai...



IHC-P staining of rat brain tissue using...



IHC-P staining of rat pancreas tissue us...