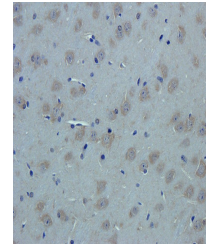


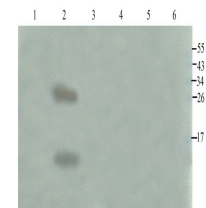
Product Datasheet

SDF1 antibody (orb11353)

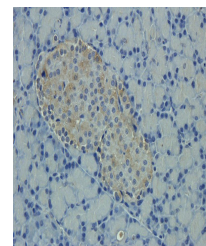
Description	SDF1 antibody
Species/Host	Rabbit
Conjugation	Unconjugated
Tested Applications	ELISA, IHC-P, WB
Immunogen	KLH conjugated synthetic peptide derived from human SDF1. Please contact us for the exact immunogen sequence. The peptide is available as orb374745.
Target	SDF1
Form/Appearance	10 mM PBS, 0.02% sodium azide
Concentration	- 100 µg (in 200 µl): 0.5 mg/ml- 200 µg (in 400 µl): 0.5 mg/ml
Storage	Store at 4°C for up to two weeks. For long term storage, aliquot and store at -20°C, avoid freeze/thaw cycles.
Note	For research use only
Isotype	IgG
Clonality	Polyclonal
Purity	Polyclonal antibodies are purified by peptide affinity chromatography
MW	11 kDa
Uniprot ID	P48061, P40224
Entrez	6387
Dilution Range	WB: 1:100-800, IHC-P: 1:100-500 (based on 0.5 mg/ml)
Expiration Date	12 months from date of receipt.



Immunohistochemical staining of mouse brain tissue.



Western blot analysis of rat brain (lane 1-6).



IHC-P staining of rat pancreas tissue.