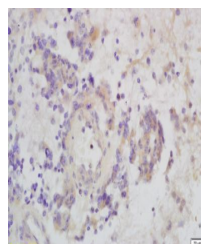


Product Datasheet

c-Raf (phospho-Ser338/Tyr340) antibody (orb11325)

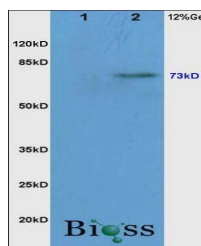
Description	c-Raf (phospho-Ser338/Tyr340) antibody
Species/Host	Rabbit
Reactivity	Human, Mouse
Conjugation	Unconjugated
Tested Applications	FC, WB
Immunogen	KLH conjugated Synthesised phosphopeptide derived from human RAF1 around the phosphorylation site of Ser338/Tyr340 (RD(p-S)S(p-Y)YW)
Target	phospho-RAF1 (Ser338/Tyr340)
Preservatives	0.01M TBS(pH7.4) with 1% rAlbumin, 0.03% Proclin300 and 50% Glycerol.
Form/Appearance	Liquid
Concentration	1mg/ml
Storage	Shipped at 4°C. Store at -20 °C for one year. Avoid repeated freeze/thaw cycles.
Note	For research use only
Isotype	IgG
Clonality	Polyclonal
MW	73 kDa
Uniprot ID	P04049
Dilution Range	WB=1:500-2000, Flow-Cyt=2ug/Test
Expiration Date	12 months from date of receipt.



Immunohistochemical staining of human gl...



Western blot analysis of mouse heart lysate...



rat brain tissue (Lane 2) using c-Raf (p...