
Product Datasheet

CD63 antibody (orb11317)

Description

CD63 antibody

Species/Host

Rabbit

Reactivity

Mouse

Conjugation

Unconjugated

Tested Applications

ELISA, IHC-P, WB

Immunogen

KLH conjugated synthetic peptide derived from human CD63. Please contact us for the exact immunogen sequence. The peptide is available as orb374743.

Target

CD63

Form/Appearance

10 mM PBS, 0.02% sodium azide

Concentration

- 100 µg (in 200 µl): 0.5 mg/ml- 200 µg (in 400 µl): 0.5 mg/ml

Storage

Store at 4°C for up to two weeks. For long term storage, aliquot and store at -20°C, avoid freeze/thaw cycles.

Note

For research use only

Isotype

IgG

Clonality

Polyclonal

Purity

Polyclonal antibodies are purified by peptide affinity chromatography

MW

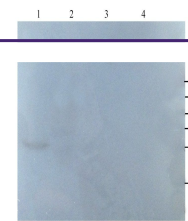
26 kDa

Uniprot ID
[P08962](#)
NCBI
[001244318](#), [001257389](#), [11](#)
Entrez
[967](#)
Dilution Range

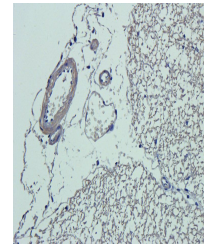
WB: 1:100-1000, IHC-P: 1:100-500 (based on 0.5 mg/ml)

Expiration Date

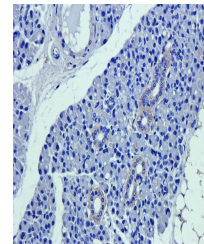
12 months from date of receipt.



Western blot analysis of mouse heart (la...



Immunohistochemical staining of paraffin...



IHC-P staining of mouse lymph node tissu...