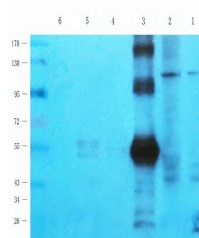


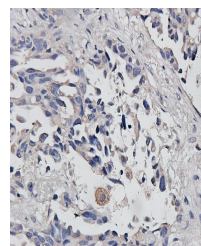
Product Datasheet

p-Selectin antibody (orb11315)

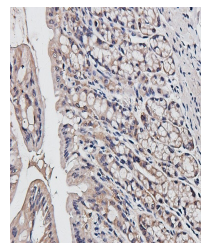
Description	p-Selectin antibody
Species/Host	Rabbit
Reactivity	Human, Mouse, Rat
Conjugation	Unconjugated
Tested Applications	ELISA, IHC-P, WB
Target	p-Selectin
Form/Appearance	10 mM PBS, 0.02% sodium azide
Concentration	- 100 µg (in 200 µl): 0.5 mg/ml- 200 µg (in 400 µl): 0.5 mg/ml
Storage	Store at 4°C for up to two weeks. For long term storage, aliquot and store at -20°C, avoid freeze/thaw cycles.
Note	For research use only
Isotype	IgG
Clonality	Polyclonal
Purity	Polyclonal antibodies are purified by peptide affinity chromatography
MW	90 kDa
Uniprot ID	P98106 , Q01102 , P16109
NCBI	002996 , 003005
Entrez	6403
Dilution Range	WB: 1:100-800, IHC-P: 1:50-300
Expiration Date	12 months from date of receipt.



Western blot analysis of mouse colon (la...



Immunohistochemical analysis of formalin...



Immunohistochemical staining of guinea p...