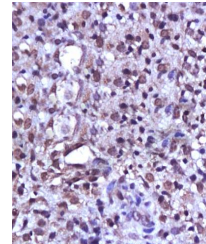


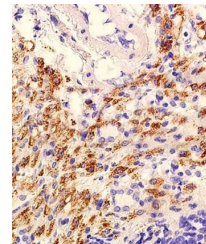
Product Datasheet

AKT (phospho-Ser473) antibody (orb11293)

Description	AKT (phospho-Ser473) antibody
Species/Host	Rabbit
Reactivity	Human, Mouse, Rat
Conjugation	Unconjugated
Tested Applications	FC, IHC-P, WB
Immunogen	KLH conjugated Synthesised phosphopeptide derived from human AKT around the phosphorylation site of Ser473 (QF(p-S)YS)
Target	phospho-AKT (Ser473)
Preservatives	0.01M TBS(pH7.4) with 1% rAlbumin, 0.03% Proclin300 and 50% Glycerol.
Form/Appearance	Liquid
Concentration	1mg/ml
Storage	Shipped at 4°C. Store at -20 °C for one year. Avoid repeated freeze/thaw cycles.
Note	For research use only
Isotype	IgG
Clonality	Polyclonal
MW	56 kDa
Uniprot ID	P31749
Dilution Range	WB=1:500-2000, IHC-P=1:100-500, Flow-Cyt=2ug/Test, IHC-F=1:100-500, IF=1:100-500, ELISA=1:5000-10000
Expiration Date	12 months from date of receipt.



IHC-P of human endometrium tissue (PKB (...))



Immunohistochemical analysis of formalin...