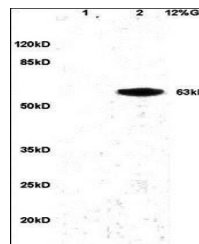


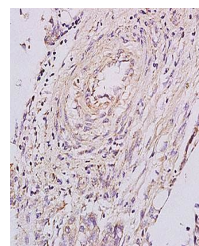
Product Datasheet

PGRN antibody (orb11269)

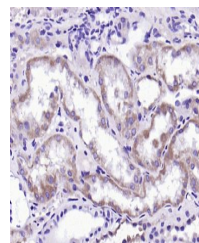
| | |
|----------------------------|---|
| Description | PGRN antibody |
| Species/Host | Rabbit |
| Reactivity | Human |
| Conjugation | Unconjugated |
| Tested Applications | IHC-P |
| Immunogen | KLH conjugated synthetic peptide derived from human PGRN (451-550/593 aa) |
| Target | Granulin |
| Preservatives | 0.01M TBS(pH7.4) with 1% rAlbumin, 0.03% Proclin300 and 50% Glycerol. |
| Form/Appearance | Liquid: 0.01M TBS(pH7.4) with 1% rAlbumin, 0.03% Proclin300 and 50% Glycerol. |
| Concentration | 1mg/ml |
| Storage | Shipped at 4°C. Store at -20 °C for one year. Avoid repeated freeze/thaw cycles. |
| Note | For research use only |
| Isotype | IgG |
| Clonality | Polyclonal |
| Purity | affinity purified by Protein A |
| MW | 63 kDa |
| Uniprot ID | P28799 |
| Dilution Range | IHC-P=1:100-500, WB=1:500-2000, IHC-F=1:100-500, IF=1:100-500, ELISA=1:5000-10000 |
| Expiration Date | 12 months from date of receipt. |



Western blot analysis of human colon carcinoma tissue.



Immunohistochemical analysis of formalin-fixed paraffin-embedded (FFPE) human colon carcinoma tissue.



IHC-P image of Human kidney tissue using PGRN antibody (orb11269).