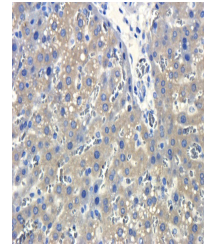


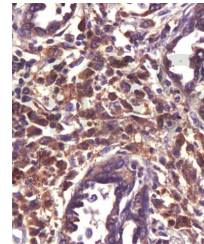
## Product Datasheet

### MDR1 antibody (orb11267)

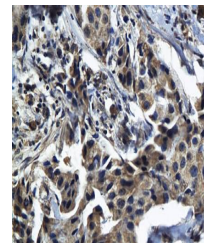
<b>Description</b>	MDR1 antibody
<b>Species/Host</b>	Rabbit
<b>Conjugation</b>	Unconjugated
<b>Tested Applications</b>	ELISA, ICC, IF, IHC-P
<b>Immunogen</b>	KLH conjugated synthetic peptide derived from human MDR1. Please contact us for the exact immunogen sequence. The peptide is available as orb374742.
<b>Target</b>	MDR1
<b>Form/Appearance</b>	10 mM PBS, 0.02% sodium azide
<b>Concentration</b>	- 100 µg (in 200 µl): 0.5 mg/ml- 200 µg (in 400 µl): 0.5 mg/ml
<b>Storage</b>	Store at 4°C for up to two weeks. For long term storage, aliquot and store at -20°C, avoid freeze/thaw cycles.
<b>Note</b>	For research use only
<b>Isotype</b>	IgG
<b>Clonality</b>	Polyclonal
<b>Purity</b>	Polyclonal antibodies are purified by peptide affinity chromatography
<b>MW</b>	141 kDa
<b>Uniprot ID</b>	<a href="#">P08183</a> , <a href="#">P06795</a> , <a href="#">P43245</a>
<b>NCBI</b>	<a href="#">21</a> , <a href="#">000927</a> , <a href="#">000918</a> , <a href="#">41</a>
<b>Entrez</b>	<a href="#">5243</a>
<b>Dilution Range</b>	IF/ICC: 1:1000, IHC-P:1:1000 (based on 0.5 mg/ml)
<b>Expiration Date</b>	12 months from date of receipt.



Immunohistochemical staining of paraffin...



Immunohistochemical analysis of formalin...



IHC-P of human lung cancer tissue(p-Glyc...