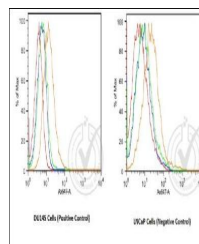


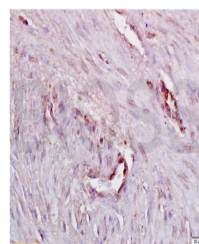
Product Datasheet

P-Cadherin antibody (orb11243)

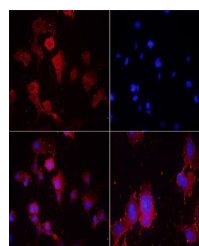
Description	P-Cadherin antibody
Species/Host	Rabbit
Reactivity	Human
Conjugation	Unconjugated
Tested Applications	FC, WB
Immunogen	KLH conjugated synthetic peptide derived from human P-cadherin (625-725/829 aa)
Target	P-cadherin
Preservatives	0.01M TBS(pH7.4) with 1% rAlbumin, 0.03% Proclin300 and 50% Glycerol.
Form/Appearance	Liquid
Concentration	1mg/ml
Storage	Shipped at 4°C. Store at -20 °C for one year. Avoid repeated freeze/thaw cycles.
Note	For research use only
Isotype	IgG
Clonality	Polyclonal
MW	80 kDa
Uniprot ID	P22223
Dilution Range	WB=1:500-2000, Flow-Cyt=2µg/Test, IHC-P=1:100-500, IHC-F=1:100-500, ICC=1:100-500, IF=1:100-500, ELISA=1:5000-10000
Expiration Date	12 months from date of receipt.



Flow cytometric analysis of human DU145 ...



Immunohistochemical staining of human en...



Immunofluorescence analysis of U251 cell...