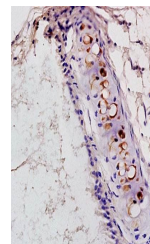


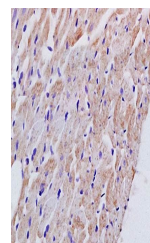
Product Datasheet

PAF Receptor antibody (orb11225)

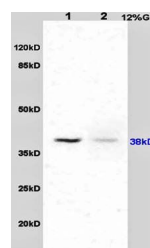
Description	PAF Receptor antibody
Species/Host	Rabbit
Reactivity	Human, Mouse, Rat
Conjugation	Unconjugated
Tested Applications	FC, IHC-P
Immunogen	KLH conjugated synthetic peptide derived from human PAFR (231-342/342 aa)
Target	PAFR/PAF Receptor
Preservatives	0.01M TBS(pH7.4) with 1% rAlbumin, 0.03% Proclin300 and 50% Glycerol.
Form/Appearance	Liquid
Concentration	1mg/ml
Storage	Shipped at 4°C. Store at -20 °C for one year. Avoid repeated freeze/thaw cycles.
Note	For research use only
Isotype	IgG
Clonality	Polyclonal
MW	38 kDa
Uniprot ID	P25105
Dilution Range	IHC-P=1:100-500, Flow-Cyt=1µg/Test, WB=1:500-2000, IHC-F=1:100-500, IF=1:100-500, ELISA=1:5000-10000
Expiration Date	12 months from date of receipt.



IHC-P of rat heart tissue (PAF Receptor ...



IHC-P of rat lung tissue (PAF Receptor a...



Western blot analysis of rat lung lysate...