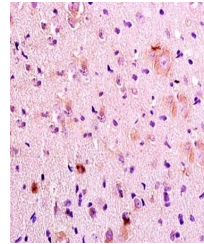


Product Datasheet

MAPK14 (phospho-Thr180/Tyr182) antibody (orb11208)

| | |
|----------------------------|---|
| Description | MAPK14 (phospho-Thr180/Tyr182) antibody |
| Species/Host | Rabbit |
| Reactivity | Human, Mouse, Rat |
| Conjugation | Unconjugated |
| Tested Applications | FC, IHC-P, WB |
| Immunogen | KLH conjugated Synthesised phosphopeptide derived from human p38 MAPK around the phosphorylation site of Thr180/Tyr182 (M(p-T)G(p-Y)VA) |
| Target | Phospho-P38 MAPK (Thr180 + Tyr182) |
| Preservatives | 0.01M TBS(pH7.4) with 1% rAlbumin, 0.03% Proclin300 and 50% Glycerol. |
| Form/Appearance | Liquid |
| Concentration | 1mg/ml |
| Storage | Shipped at 4°C. Store at -20 °C for one year. Avoid repeated freeze/thaw cycles. |
| Note | For research use only |
| Isotype | IgG |
| Clonality | Polyclonal |
| MW | 42 kDa |
| Uniprot ID | Q16539 |
| Dilution Range | WB=1:500-2000, IHC-P=1:100-500, Flow-Cyt=1µg/Test, IHC-F=1:100-500, IF=1:100-500 |
| Expiration Date | 12 months from date of receipt. |



Immunohistochemical analysis of formalin...