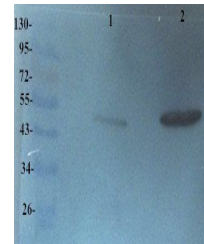


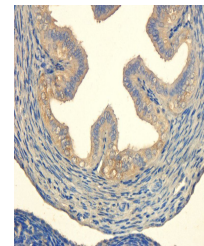
Product Datasheet

OPG antibody (orb11189)

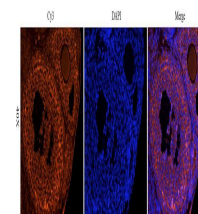
Description	OPG antibody
Species/Host	Rabbit
Conjugation	Unconjugated
Tested Applications	ELISA, ICC, IF, IHC-P, WB
Immunogen	KLH conjugated synthetic peptide derived from human OPG. Please contact us for the exact immunogen sequence. The peptide is available as orb374854.
Target	OPG
Form/Appearance	10 mM PBS, 0.02% sodium azide
Concentration	- 100 µg (in 200 µl): 0.5 mg/ml- 200 µg (in 400 µl): 0.5 mg/ml
Storage	Store at 4°C for up to two weeks. For long term storage, aliquot and store at -20°C, avoid freeze/thaw cycles.
Note	For research use only
Isotype	IgG
Clonality	Polyclonal
Purity	Purified by Protein A affinity chromatography.
MW	43 kDa
Uniprot ID	000300
NCBI	002546 , 002537 , 31
Entrez	4982
Dilution Range	IF/ICC: 1:200, IHC-P: 1:200, WB: 2 µg/ml
Expiration Date	12 months from date of receipt.



Western blot analysis of Rat heart (Lane...)



Immunohistochemical staining of paraffin...



IF image of mouse ovary tissue using OPG...