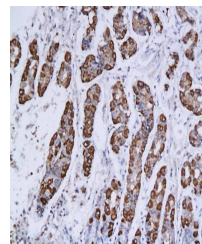


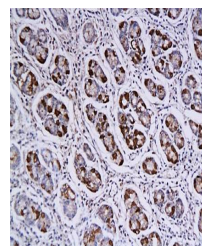
Product Datasheet

OCT4 antibody (orb11184)

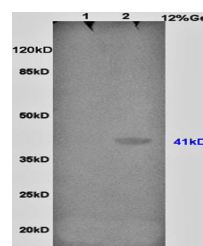
Description	OCT4 antibody
Species/Host	Rabbit
Reactivity	Human, Mouse, Rat
Conjugation	Unconjugated
Tested Applications	FC, WB
Immunogen	KLH conjugated synthetic peptide derived from human OCT4 (201-300/360 aa)
Target	Oct4
Preservatives	0.01M TBS(pH7.4) with 1% rAlbumin, 0.03% Proclin300 and 50% Glycerol.
Form/Appearance	Liquid
Concentration	1mg/ml
Storage	Shipped at 4°C. Store at -20 °C for one year. Avoid repeated freeze/thaw cycles.
Note	For research use only
Isotype	IgG
Clonality	Polyclonal
MW	39 kDa
Uniprot ID	Q01860
Dilution Range	WB=1:500-2000, Flow-Cyt=1ug/Test, IHC-P=1:100-500, IHC-F=1:100-500, IF=1:100-500, ELISA=1:5000-10000
Expiration Date	12 months from date of receipt.



Immunohistochemical analysis of paraffin...



IHC-P of human gastric tissue (OCT4 anti...



Western blot analysis of rat brain lysat...