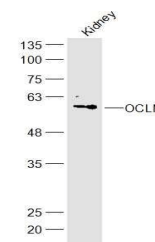


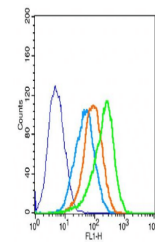
Product Datasheet

Occludin antibody (orb11181)

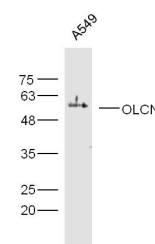
Description	Occludin antibody
Species/Host	Rabbit
Reactivity	Human
Conjugation	Unconjugated
Tested Applications	FC, WB
Immunogen	KLH conjugated synthetic peptide derived from mouse OCLN (431-522/522 aa)
Target	OCLN
Preservatives	0.01M TBS(pH7.4) with 1% rAlbumin, 0.03% Proclin300 and 50% Glycerol.
Form/Appearance	Liquid
Concentration	1mg/ml
Storage	Shipped at 4°C. Store at -20 °C for one year. Avoid repeated freeze/thaw cycles.
Note	For research use only
Isotype	IgG
Clonality	Polyclonal
MW	57 kDa
Uniprot ID	Q61146
Dilution Range	WB=1:500-2000, Flow-Cyt=2µg/Test
Expiration Date	12 months from date of receipt.



Western blot analysis of mouse kidney ly...



Flow cytometric analysis of 293FT cells ...



Western blot analysis of A549 Cell Lysat...