
Product Datasheet

SLC22A6 antibody (orb11177)

Description

SLC22A6 antibody

Species/Host

Rabbit

Reactivity

Human, Mouse, Porcine, Rat

Conjugation

Unconjugated

Tested

ELISA, ICC, IF, IHC-P, WB

Applications
Immunogen

KLH conjugated synthetic peptide derived from human SLC22A6. Please contact us for the exact immunogen sequence. The peptide is available as orb12898.

Target

SLC22A6

Form/Appearance

10 mM PBS, 0.02% sodium azide

Concentration

- 100 µg (in 200 µl): 0.5 mg/ml- 200 µg (in 400 µl): 0.5 mg/ml

Storage

Store at 4°C for up to two weeks. For long term storage, aliquot and store at -20°C, avoid freeze/thaw cycles.

Note

For research use only

Isotype

IgG

Clonality

Polyclonal

Purity

Polyclonal antibodies are purified by peptide affinity chromatography

MW

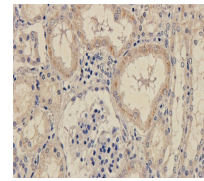
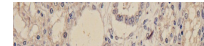
62 kDa

Uniprot ID
[Q4U2R8](#)
Entrez
[18399](#)
Dilution Range

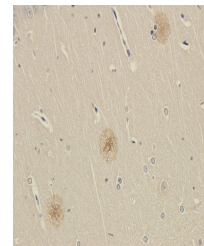
WB: 1:200-2000, IHC-P: 1:50-400, IF/ICC: 1:50-400 (based on 0.5 mg/ml)

Expiration Date

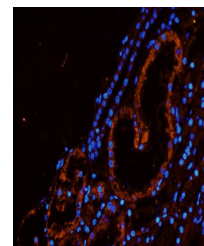
12 months from date of receipt.



IHC-P image of pig kidney tissue using S...



IHC-P staining of rat brain tissue using...



Immunofluorescence image of pig kidney t...