

---

## Product Datasheet

### Nrf2 antibody (orb11165)

**Description**

Nrf2 antibody

**Species/Host**

Rabbit

**Conjugation**

Unconjugated

**Tested Applications**

ICC, IF, IHC-P, WB

**Immunogen**

KLH conjugated synthetic peptide derived from human Nrf2. Please contact us for the exact immunogen sequence. The peptide is available as orb374740.

**Target**

Nrf2

**Form/Appearance**

10 mM PBS, 0.02% sodium azide

**Concentration**

- 100 µg (in 200 µl): 0.5 mg/ml- 200 µg (in 400 µl): 0.5 mg/ml

**Storage**

Store at 4°C for up to two weeks. For long term storage, aliquot and store at -20°C, avoid freeze/thaw cycles.

**Note**

For research use only

**Isotype**

IgG

**Clonality**

Polyclonal

**Purity**

Polyclonal antibodies are purified by peptide affinity chromatography

**MW**

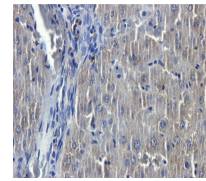
68 kDa

**Uniprot ID**
[Q16236](#)
**NCBI**
[001138884](#), [21](#), [001145412](#), [11](#)
**Entrez**
[4780](#)
**Dilution Range**

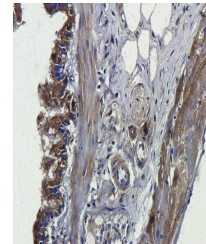
WB:1:100-1000, IHC-P:1:100-600, IF/ICC: 1:100-600 (based on 0.5 mg/ml)

**Expiration Date**

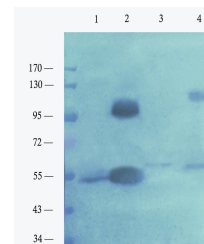
12 months from date of receipt.



Immunohistochemical staining of paraffin...



Immunohistochemical staining of rat lung...



Western blot analysis of mouse skin (lan...