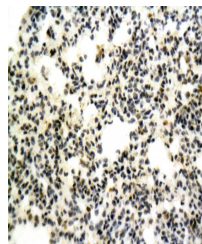


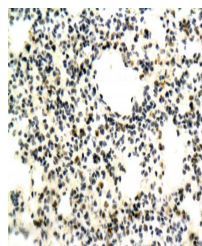
Product Datasheet

Neurokinin 1 Receptor antibody (orb11133)

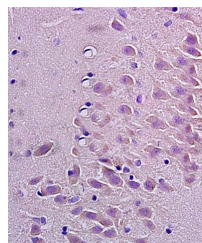
Description	Neurokinin 1 Receptor antibody
Species/Host	Rabbit
Reactivity	Human, Rat
Conjugation	Unconjugated
Tested Applications	FC, WB
Immunogen	KLH conjugated synthetic peptide derived from human SPR (2-50/407 aa)
Target	Neurokinin 1 Receptor
Preservatives	0.01M TBS(pH7.4) with 1% rAlbumin, 0.03% Proclin300 and 50% Glycerol.
Form/Appearance	Liquid
Concentration	1mg/ml
Storage	Shipped at 4°C. Store at -20 °C for one year. Avoid repeated freeze/thaw cycles.
Note	For research use only
Isotype	IgG
Clonality	Polyclonal
MW	45 kDa
Uniprot ID	P25103
Dilution Range	WB=1:500-2000, Flow-Cyt=2ug/Test, IHC-P=1:100-500, IHC-F=1:100-500, IF=1:100-500, ELISA=1:5000-10000
Expiration Date	12 months from date of receipt.



Immunohistochemical staining of paraffin...



IHC-P of mouse lung tissue (orb11133 at ...



Immunohistochemical analysis of formali...