

---

## Product Datasheet

### Nestin antibody (orb11109)

**Description**

Nestin antibody

**Species/Host**

Rabbit

**Reactivity**

Human, Mouse, Rat

**Conjugation**

Unconjugated

**Tested**

ELISA, IHC-P, WB

**Applications**
**Immunogen**

KLH conjugated synthetic peptide derived from human Nestin. Please contact us for the exact immunogen sequence. The peptide is available as orb374738.

**Target**

Nestin. Recognized endogenous levels of total Nestin

**Form/Appearance**

10 mM PBS, 0.02% sodium azide

**Concentration**

- 100 µg (in 200 µl): 0.5 mg/ml- 200 µg (in 400 µl): 0.5 mg/ml

**Storage**

Store at 4°C for up to two weeks. For long term storage, aliquot and store at -20°C, avoid freeze/thaw cycles.

**Note**

For research use only

**Isotype**

IgG

**Clonality**

Polyclonal

**Purity**

Polyclonal antibodies are purified by peptide affinity chromatography

**MW**

177 kDa

**Uniprot ID**
[P48681](#), [P21263](#), [Q6P5H2](#)
**NCBI**
[006608](#), [006617](#)
**Entrez**
[10763](#)
**Dilution Range**

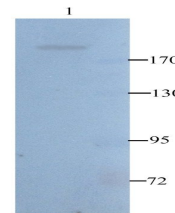
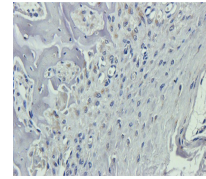
WB: 1:50-500, IHC-P: 1:100-500 (based on 0.5 mg/ml)

**Expiration Date**

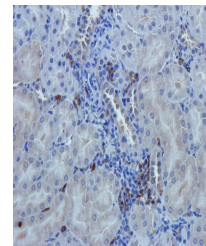
12 months from date of receipt.



Immunohistochemical staining of mouse bo...



Western blot analysis of U251 cells usin...



Immunohistochemical staining of paraffin...