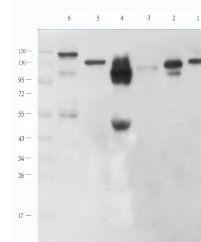


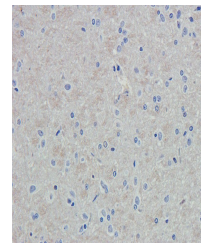
Product Datasheet

N Cadherin antibody (orb11100)

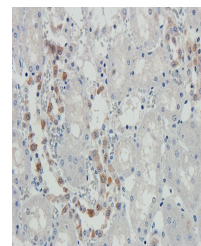
Description	N Cadherin antibody
Species/Host	Rabbit
Conjugation	Unconjugated
Tested Applications	ICC, IF, IHC-P, WB
Immunogen	KLH conjugated synthetic peptide derived from human N Cadherin. Please contact us for the exact immunogen sequence. The peptide is available as orb12897.
Target	N Cadherin
Form/Appearance	10 mM PBS, 0.02% sodium azide
Concentration	- 100 µg (in 200 µl): 0.5 mg/ml- 200 µg (in 400 µl): 0.5 mg/ml
Storage	Store at 4°C for up to two weeks. For long term storage, aliquot and store at -20°C, avoid freeze/thaw cycles.
Note	For research use only
Isotype	IgG
Clonality	Polyclonal
Purity	Polyclonal antibodies are purified by peptide affinity chromatography
MW	100 kDa
Uniprot ID	P15116 , Q9Z1Y3 , P19022
NCBI	001295105 , 001308176
Entrez	1000
Dilution Range	IF/ICC: 1:50-500, IHC-P: 1:50-500, WB: 1:200-2000
Expiration Date	12 months from date of receipt.



Western blot analysis of rat heart (lane...)



IHC-P image of rat brain tissue using an...



Immunohistochemical staining of pig kidn...