

Product Datasheet

CHRNA7 antibody (orb11096)

Description

CHRNA7 antibody

Species/Host

Rabbit

Reactivity

Gallus, Human, Mouse, Rat

Conjugation

Unconjugated

Tested Applications

ELISA, ICC, IF, IHC-P, WB

Immunogen

KLH conjugated synthetic peptide derived from human CHRNA7. Please contact us for the exact immunogen sequence. The peptide is available as orb374737.

Target

CHRNA7

Form/Appearance

10 mM PBS, 0.02% sodium azide

Concentration

- 100 µg (in 200 µl): 0.5 mg/ml- 200 µg (in 400 µl): 0.5 mg/ml

Storage

Store at 4°C for up to two weeks. For long term storage, aliquot and store at -20°C, avoid freeze/thaw cycles.

Note

For research use only

Isotype

IgG

Clonality

Polyclonal

Purity

Polyclonal antibodies are purified by peptide affinity chromatography

MW

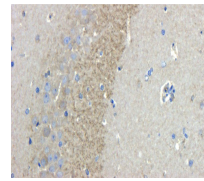
43 kDa

Uniprot ID
[P49582](#), [Q05941](#), [P36544](#)
NCBI
[11](#), [000737](#), [000746](#), [51](#)
Entrez
[1139](#)
Dilution Range

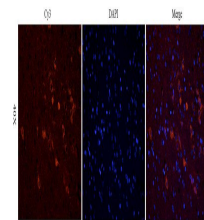
IF/ICC: 1:200, WB: 2µg/ml, IHC-P:1:200

Expiration Date

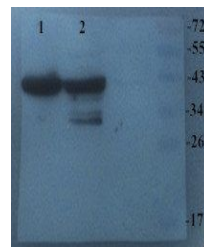
12 months from date of receipt.



Immunohistochemical staining of rat brain...



IF image of rat brain tissue using CHRNA...



Western blot analysis of Mouse brain (La...