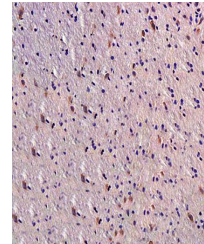


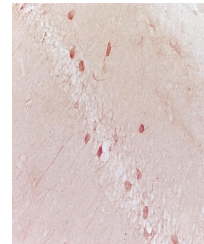
Product Datasheet

Melatonin Receptor 1A antibody (orb11085)

Description	Melatonin Receptor 1A antibody
Species/Host	Rabbit
Conjugation	Unconjugated
Tested Applications	ELISA, ICC, IF, IHC-P, WB
Immunogen	KLH conjugated synthetic peptide derived from human Melatonin Receptor 1A. Please contact us for the exact immunogen sequence. The peptide is available as orb374736.
Target	Melatonin Receptor 1A
Form/Appearance	10 mM PBS, 0.02% sodium azide
Concentration	- 100 µg (in 200 µl): 0.5 mg/ml- 200 µg (in 400 µl): 0.5 mg/ml
Storage	Store at 4°C for up to two weeks. For long term storage, aliquot and store at -20°C, avoid freeze/thaw cycles.
Note	For research use only
Isotype	IgG
Clonality	Polyclonal
Purity	Polyclonal antibodies are purified by peptide affinity chromatography
MW	38 kDa
Uniprot ID	B7X945 , P48039 , Q61184
NCBI	31 , 005958 , 005949 , 11
Entrez	4543
Dilution Range	WB: 2 µg/ml, IHC-P:1:500, IF/ICC: 1:300
Expiration Date	12 months from date of receipt.



Immunohistochemical analysis of formali...



IHC-P of mouse hippocampus tissue using ...



IHC-P of mouse hippocampus tissue (orb11...