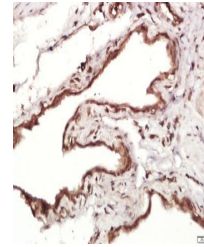


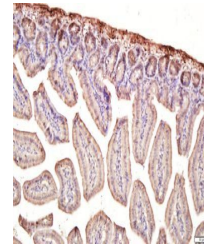
Product Datasheet

MMRN1 antibody (orb1108)

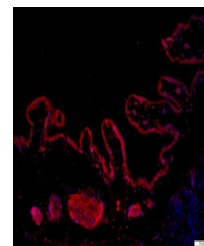
Description	MMRN1 antibody
Species/Host	Rabbit
Conjugation	Unconjugated
Tested Applications	ELISA
Immunogen	KLH conjugated synthetic peptide derived from human MMRN1 (851-950/1228 aa)
Target	MMRN1
Preservatives	0.01M TBS(pH7.4) with 1% rAlbumin, 0.03% Proclin300 and 50% Glycerol.
Form/Appearance	Liquid
Concentration	1mg/ml
Storage	Shipped at 4°C. Store at -20 °C for one year. Avoid repeated freeze/thaw cycles.
Note	For research use only
Isotype	IgG
Clonality	Polyclonal
MW	136 kDa
Uniprot ID	Q13201
Expiration Date	12 months from date of receipt.



Immunohistochemical staining of rat blad...



Immunohistochemical staining of mouse sm...



Immunohistochemical staining of rat blad...