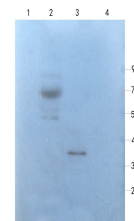


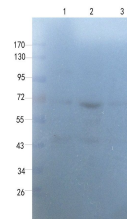
Product Datasheet

Myeloperoxidase antibody (orb11073)

Description	Myeloperoxidase antibody
Species/Host	Rabbit
Conjugation	Unconjugated
Tested Applications	WB
Immunogen	KLH conjugated synthetic peptide derived from human Myeloperoxidase. Please contact us for the exact immunogen sequence. The peptide is available as orb374734.
Target	Myeloperoxidase
Form/Appearance	10 mM PBS, 0.02% sodium azide
Concentration	- 100 µg (in 200 µl): 0.5 mg/ml- 200 µg (in 400 µl): 0.5 mg/ml
Storage	Store at 4°C for up to two weeks. For long term storage, aliquot and store at -20°C, avoid freeze/thaw cycles.
Note	For research use only
Isotype	IgG
Clonality	Polyclonal
Purity	Polyclonal antibodies are purified by peptide affinity chromatography
MW	84 kDa
Uniprot ID	P11247, P05164
NCBI	000250, 000241, 11
Entrez	4353
Dilution Range	WB: 1:100-1000
Expiration Date	12 months from date of receipt.



WB analysis of rat bladder (lane 1)



rat lung (lane 2)