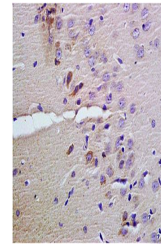


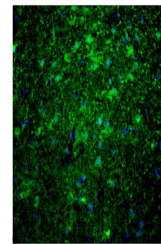
Product Datasheet

MDR1 antibody (orb11034)

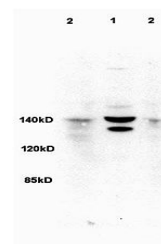
Description	MDR1 antibody
Species/Host	Rabbit
Reactivity	Human, Mouse, Rat
Conjugation	Unconjugated
Tested Applications	FC, ICC, IHC-P, WB
Immunogen	KLH conjugated synthetic peptide derived from human MDR1 (1051-1280/1280 aa)
Target	MDR1/P Glycoprotein
Preservatives	0.01M TBS(pH7.4) with 1% rAlbumin, 0.03% Proclin300 and 50% Glycerol.
Form/Appearance	Liquid
Concentration	1mg/ml
Storage	Shipped at 4°C. Store at -20 °C for one year. Avoid repeated freeze/thaw cycles.
Note	For research use only
Isotype	IgG
Clonality	Polyclonal
MW	141 kDa
Uniprot ID	P08183
Dilution Range	WB=1:500-2000, IHC-P=1:100-500, ICC=1:100, Flow-Cyt=1µg/Test, IHC-F=1:100-500, IF=1:100-500, ELISA=1:5000-10000
Expiration Date	12 months from date of receipt.



Paraffin-embedded rat brain tissue fixed...



Paraffin-embedded rat brain tissue fixed...



Western blot analysis of rat brain lysat...