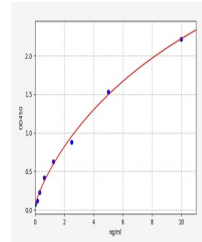


## Product Datasheet

# Human CAMK1D(Calcium/calmodulin-dependent protein kinase type 1D) ELISA Kit (orb1100925)

<b>Description</b>	Human CAMK1D(Calcium/calmodulin-dependent protein kinase type 1D) ELISA Kit
<b>Reactivity</b>	Human
<b>Range</b>	0.156-10ng/ml
<b>Target</b>	CAMK1D
<b>Storage</b>	2-8 °C for 6 months
<b>Note</b>	For research use only
<b>Uniprot ID</b>	<a href="#">Q8IU85</a>
<b>Sensitivity</b>	0.094ng/ml
<b>Expiration Date</b>	Please enquire.



Human  
CAMK1D(Calcium/calmodulin-  
dependen...