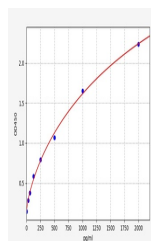


Product Datasheet

Human HTRA2(Serine protease HTRA2, mitochondrial)ELISA Kit (orb1100897)

Description	Human HTRA2(Serine protease HTRA2, mitochondrial)ELISA Kit
Reactivity	Human
Range	31.25-2000pg/ml
Target	HTRA2
Storage	2-8 °C for 6 months
Note	For research use only
Uniprot ID	O43464
Sensitivity	18.75pg/ml
Expiration Date	Please enquire.



Human HTRA2(Serine protease HTRA2, mitoc...