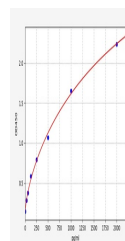


Product Datasheet

Mouse CCL28 / MEC (C-C motif chemokine 28) ELISA Kit (orb1100848)

Description	Mouse CCL28 / MEC (C-C motif chemokine 28) ELISA Kit
Reactivity	Mouse
Range	31.25-2000pg/ml
Target	CCL28
Storage	2-8 °C for 6 months
Note	For research use only
Sample Types	Serum, Plasma, Cell Culture Supernatant, Cell or tissue lysate, Other liquid samples
Uniprot ID	Q9JIL2
Sensitivity	18.75pg/ml
Expiration Date	Please enquire.



Mouse
CCL28 /
MEC (C-C
motif
chemokine
2...