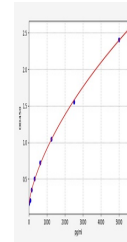


Product Datasheet

Mouse Glp1r (Glucagon-like peptide 1 receptor) ELISA Kit (orb1100815)

Description	Mouse Glp1r (Glucagon-like peptide 1 receptor) ELISA Kit
Reactivity	Mouse
Range	78.125-5000pg/ml
Target	Glp1r
Storage	2-8 °C for 6 months
Note	For research use only
Sample Types	Serum, Plasma, Cell Culture Supernatant, Cell or tissue lysate, Other liquid samples
Uniprot ID	035659
Sensitivity	46.875pg/ml
Expiration Date	Please enquire.



Mouse
Glp1r
(Glucagon-
like
peptide 1
rec...