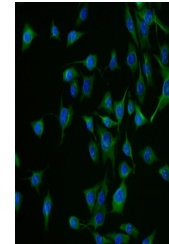


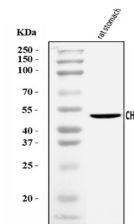
## Product Datasheet

# Chromogranin A/Chga Antibody (orb1098109)

<b>Description</b>	Chromogranin A/Chga Antibody
<b>Species/Host</b>	Rabbit
<b>Reactivity</b>	Mouse, Rat
<b>Conjugation</b>	Unconjugated
<b>Tested Applications</b>	ICC, IF, WB
<b>Immunogen</b>	A synthetic peptide corresponding to a sequence of rat Chromogranin A/Chga (DTKVMKCVLEVISDSLK).
<b>Form/Appearance</b>	Lyophilized
<b>Concentration</b>	Adding 0.2 ml of distilled water will yield a concentration of 500 µg/ml.
<b>Storage</b>	Maintain refrigerated at 2-8°C for up to 2 weeks. For long term storage store at -20°C in small aliquots to prevent freeze-thaw cycles.
<b>Note</b>	For research use only
<b>Application notes</b>	Tested Species: In-house tested species with positive results. Other applications have not been tested. Optimal dilutions should be determined by end users. Adding 0.2 ml of distilled water will yield a concentration of 500 µg/ml.
<b>Isotype</b>	Rabbit IgG
<b>Clonality</b>	Polyclonal
<b>MW</b>	70-80 kDa
<b>Uniprot ID</b>	<b>P10354</b>
<b>Dilution Range</b>	Western blot, 0.25-0.5 µg/ml, Rat Immunocytochemistry/Immunofluorescence, 5 µg/ml, Mouse
<b>Expiration Date</b>	12 months from date of receipt.



IF analysis of Chromogranin A/Chga using...



Western blot analysis of Chromogranin A/...