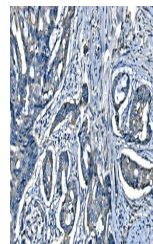


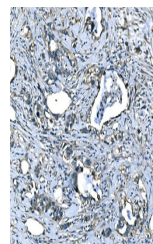
Product Datasheet

SPG3A/ATL1 Antibody (orb1098046)

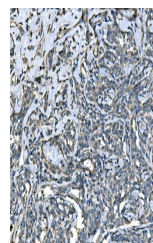
Description	SPG3A/ATL1 Antibody
Species/Host	Rabbit
Reactivity	Human
Conjugation	Unconjugated
Tested Applications	FC, IHC, WB
Immunogen	A synthetic peptide corresponding to a sequence of human SPG3A/ATL1 (DKPFLAPNDLQTKHLQ).
Form/Appearance	Lyophilized
Concentration	Adding 0.2 ml of distilled water will yield a concentration of 500 µg/ml.
Storage	Maintain refrigerated at 2-8°C for up to 2 weeks. For long term storage store at -20°C in small aliquots to prevent freeze-thaw cycles.
Note	For research use only
Application notes	Tested Species: In-house tested species with positive results. Other applications have not been tested. Optimal dilutions should be determined by end users. Adding 0.2 ml of distilled water will yield a concentration of 500 µg/ml.
Isotype	Rabbit IgG
Clonality	Polyclonal
MW	64 kDa
Uniprot ID	Q8WXF7
Expiration Date	12 months from date of receipt.



IHC analysis of SPG3A/ATL1 using anti-SPG3A/ATL1 antibody.



IHC analysis of SPG3A/ATL1 using anti-SPG3A/ATL1 antibody.



IHC analysis of SPG3A/ATL1 using anti-SPG3A/ATL1 antibody.