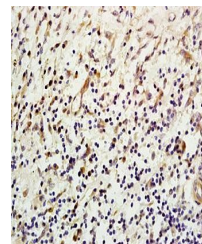


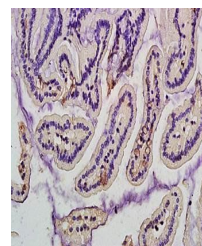
Product Datasheet

MBL2 antibody (orb10974)

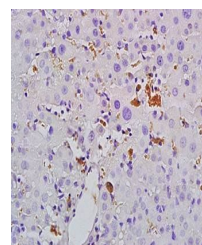
Description	MBL2 antibody
Species/Host	Rabbit
Conjugation	Unconjugated
Tested Applications	ELISA
Immunogen	KLH conjugated synthetic peptide derived from human MBL (31-130/248 aa)
Target	Mannan Binding Lectin
Preservatives	0.01M TBS(pH7.4) with 1% rAlbumin, 0.03% Proclin300 and 50% Glycerol.
Form/Appearance	Liquid
Concentration	1mg/ml
Storage	Shipped at 4°C. Store at -20 °C for one year. Avoid repeated freeze/thaw cycles.
Note	For research use only
Isotype	IgG
Clonality	Polyclonal
MW	26 kDa
Uniprot ID	P11226
Expiration Date	12 months from date of receipt.



Immunohistochemical analysis of formalin...



IHC-P of rat intestine tissue (dilution ...



IHC-P of rat liver tissue (dilution at:1...