
Product Datasheet

Ribonucleoside-diphosphate reductase, large subunit antibody (orb109562)

Description

Rabbit polyclonal to Ribonucleoside-


Species/Host

Rabbit

Reactivity

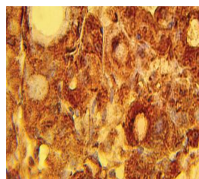
Human

Conjugation

Unconjugated

Tested Applications

ELISA, IHC, WB



Immunohistochemical staining of human li...

Immunogen

Synthetic peptide derived from the human RRM1 protein

Preservatives

Provided as solution in phosphate buffered saline with 0.08% sodium azide

Form/Appearance

Provided as solution in phosphate buffered saline with 0.08% sodium azide

Concentration

See vial for concentration

Storage

Product should be stored at -20°C. Aliquot to avoid freeze/thaw cycles

Note

For research use only

Application notes

This antibody can be used for immunohistochemistry on formalin/paraffin sections (10-15 µg/ml). Optimal concentration should be evaluated by serial dilutions.

Isotype

Ig

Uniprot ID
P23921
Hazard Information

This product is intended FOR RESEARCH USE ONLY, and FOR TESTS IN VITRO, not for use in diagnostic or therapeutic procedures involving humans or animals.

Expiration Date

12 months from date of receipt.