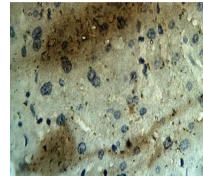

Product Datasheet

Calcium Homeostasis Modulator Protein 1 antibody (orb109550)

Description

Rabbit polyclonal to Calcium Homeostasis



Immunohistochemical staining of human he...

Species/Host	Rabbit
Reactivity	Human
Conjugation	Unconjugated
Tested Applications	ELISA, WB
Immunogen	Synthetic peptide derived from human CALHM1 protein.
Preservatives	Provided as solution in phosphate buffered saline with 0.08% sodium azide
Form/Appearance	Provided as solution in phosphate buffered saline with 0.08% sodium azide
Concentration	See vial for concentration
Storage	Product should be stored at -20°C. Aliquot to avoid freeze/thaw cycles
Note	For research use only
Application notes	Antibody can be used for Western Blotting (1:400 dilution) and immunohistochemistry (2-10 µg/ml). Optimal concentration should be evaluated by serial dilutions.
Isotype	IgG
Uniprot ID	Q8IU99
Hazard Information	This product is intended FOR RESEARCH USE ONLY, and FOR TESTS IN VITRO, not for use in diagnostic or therapeutic procedures involving humans or animals.
Expiration Date	12 months from date of receipt.