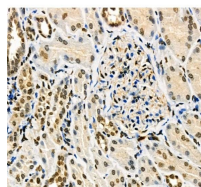


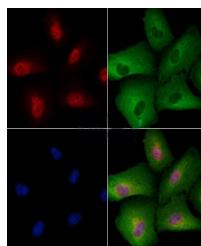
## Product Datasheet

### Phospho-TFEB (Ser211) Antibody (orb1095423)

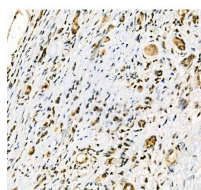
<b>Description</b>	Phospho-TFEB (Ser211) Antibody
<b>Species/Host</b>	Rabbit
<b>Reactivity</b>	Human, Mouse, Rat
<b>Conjugation</b>	Unconjugated
<b>Tested Applications</b>	ELISA, ICC, IF, IHC-P, WB
<b>Storage</b>	Maintain refrigerated at 2-8°C for up to 2 weeks. For long term storage store at -20°C in small aliquots to prevent freeze-thaw cycles.
<b>Note</b>	For research use only
<b>Clonality</b>	Polyclonal
<b>Expiration Date</b>	12 months from date of receipt.



Immunohistochemical staining of Human kidney tissue



Immunofluorescence image of A549 cells



Immunohistochemical staining of Human kidney tissue