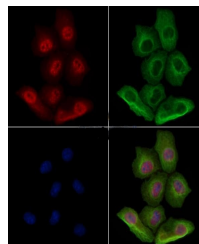


Product Datasheet

Phospho-XBP1 (Ser68) Antibody (orb1095419)

Description	Phospho-XBP1 (Ser68) Antibody
Species/Host	Rabbit
Reactivity	Human, Mouse, Rat
Conjugation	Unconjugated
Tested Applications	ELISA, ICC, IF
Storage	Maintain refrigerated at 2-8°C for up to 2 weeks. For long term storage store at -20°C in small aliquots to prevent freeze-thaw cycles.
Note	For research use only
Clonality	Polyclonal
Expiration Date	12 months from date of receipt.



Immunofluorescence analysis of HeLa cell...