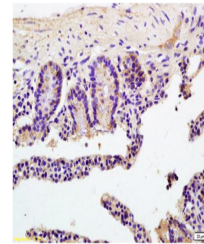


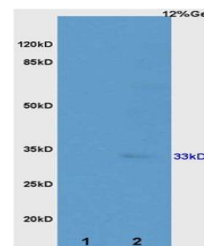
Product Datasheet

ATP1B2 antibody (orb10952)

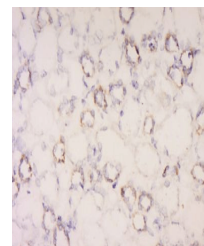
Description	ATP1B2 antibody
Species/Host	Rabbit
Reactivity	Human
Conjugation	Unconjugated
Tested Applications	ELISA, ICC, WB
Immunogen	KLH conjugated synthetic peptide derived from human ATP1b2 (201-290/290 aa)
Target	ATPase Na ⁺ / K ⁺ beta 2
Preservatives	0.01M TBS(pH7.4) with 1% rAlbumin, 0.03% Proclin300 and 50% Glycerol.
Form/Appearance	Liquid
Concentration	1mg/ml
Storage	Shipped at 4°C. Store at -20 °C for one year. Avoid repeated freeze/thaw cycles.
Note	For research use only
Isotype	IgG
Clonality	Polyclonal
MW	33 kDa
Uniprot ID	P14415
Dilution Range	WB=1:500-2000, ICC=1:100-500, IF=1:100-500, ELISA=1:5000-10000
Expiration Date	12 months from date of receipt.



Paraffin-embedded mouse colon tissue fix...



Western blot analysis of rat kidney lysa...



Immunohistochemical staining of human ki...