
Product Datasheet

Integrin alpha 5 antibody (orb10945)

Description

Integrin alpha 5 antibody

Species/Host

Rabbit

Reactivity

Human, Mouse, Porcine, Rat

Conjugation

Unconjugated

Tested Applications

ELISA, ICC, IF, IHC-P, WB

Immunogen

KLH conjugated synthetic peptide derived from human Integrin alpha 5. Please contact us for the exact immunogen sequence. The peptide is available as orb374730.

Target

Integrin alpha 5

Form/Appearance

10 mM PBS, 0.02% sodium azide

Concentration

- 100 µg (in 200 µl): 0.5 mg/ml- 200 µg (in 400 µl): 0.5 mg/ml

Storage

Store at 4°C for up to two weeks. For long term storage, aliquot and store at -20°C, avoid freeze/thaw cycles.

Note

For research use only

Isotype

IgG

Clonality

Polyclonal

Purity

Polyclonal antibodies are purified by peptide affinity chromatography

MW

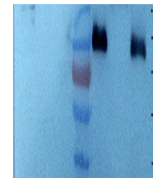
121 kDa

Uniprot ID
[P08648](#), [P11688](#)
NCBI
[002205](#), [002196](#)
Entrez
[3678](#)
Dilution Range

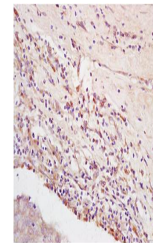
WB: 2 µg/ml, IHC-P:1:500, IF/ICC: 1:500

Expiration Date

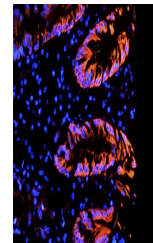
12 months from date of receipt.



Western blot analysis of Mouse bladder (...



IHC-P of human breast carcinoma using (...



IF image of pig large intestines tissue ...