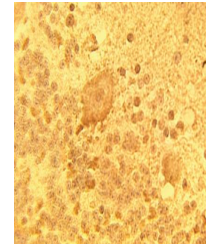


## Product Datasheet

### DEGS1 antibody (orb109421)

<b>Description</b>	Rabbit polyclonal to DEGS1
<b>Species/Host</b>	Rabbit
<b>Reactivity</b>	Human, Mouse, Rat
<b>Conjugation</b>	Unconjugated
<b>Tested Applications</b>	WB
<b>Immunogen</b>	Synthetic peptide derived from the human DEGS1 protein
<b>Preservatives</b>	Provided as solution in phosphate buffered saline with 0.08% sodium azide
<b>Form/Appearance</b>	Provided as solution in phosphate buffered saline with 0.08% sodium azide
<b>Concentration</b>	Lot specific, see vial
<b>Storage</b>	Product should be stored at -20°C. Aliquot to avoid freeze/thaw cycles
<b>Note</b>	For research use only
<b>Application notes</b>	Antibody can be used for Western blotting (1:400 starting dilution) and immunohistochemistry (10-15 µg/ml). Optimal concentration should be evaluated by serial dilutions.
<b>Isotype</b>	IgG
<b>Uniprot ID</b>	<b>O09005, Q5XIF5, O15121</b>
<b>Hazard Information</b>	This product is intended FOR RESEARCH USE ONLY, and FOR TESTS IN VITRO, not for use in diagnostic or therapeutic procedures involving humans or animals.
<b>Expiration Date</b>	12 months from date of receipt.



Immunohistochemical staining of normal h...