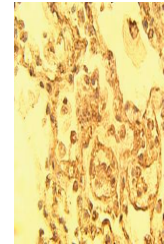


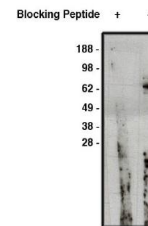
Product Datasheet

NUMB antibody (orb109402)

| | |
|----------------------------|--|
| Description | Rabbit polyclonal to NUMB |
| Species/Host | Rabbit |
| Reactivity | Human |
| Conjugation | Unconjugated |
| Tested Applications | WB |
| Immunogen | Synthetic peptide derived from human Numb protein |
| Preservatives | Provided as solution in phosphate buffered saline with 0.08% sodium azide |
| Form/Appearance | Provided as solution in phosphate buffered saline with 0.08% sodium azide |
| Concentration | Lot specific, see vial |
| Storage | Product should be stored at -20°C. Aliquot to avoid freeze/thaw cycles |
| Note | For research use only |
| Application notes | Antibody can be used for Western blotting (1:400 starting dilution) and immunohistochemistry (10-15 µg/ml). Optimal concentration should be evaluated by serial dilutions. |
| Uniprot ID | P49757 |
| Hazard Information | This product is intended FOR RESEARCH USE ONLY, and FOR TESTS IN VITRO, not for use in diagnostic or therapeutic procedures involving humans or animals. |
| Expiration Date | 12 months from date of receipt. |



Western blot analysis of normal human lu...



Western blot analysis of human brain lys...