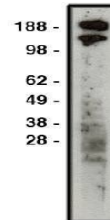


Product Datasheet

ROBO1 antibody (orb109381)

Description	Rabbit polyclonal to ROBO1
Species/Host	Rabbit
Reactivity	Human
Conjugation	Unconjugated
Tested Applications	WB
Immunogen	Synthetic peptide derived from human ROBO1 protein
Preservatives	Provided as solution in phosphate buffered saline with 0.08% sodium azide
Form/Appearance	Provided as solution in phosphate buffered saline with 0.08% sodium azide
Concentration	Lot specific, see vial
Storage	Product should be stored at -20°C. Aliquot to avoid freeze/thaw cycles
Note	For research use only
Application notes	Antibody can be used for Western blotting (1:400 starting dilution). Optimal concentration should be evaluated by serial dilutions.
Uniprot ID	Q9Y6N7
Hazard Information	This product is intended FOR RESEARCH USE ONLY, and FOR TESTS IN VITRO, not for use in diagnostic or therapeutic procedures involving humans or animals.
Expiration Date	12 months from date of receipt.



Western blot analysis of HT-29 cell lysa...