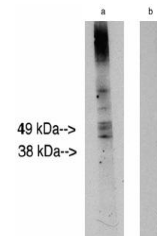


## Product Datasheet

### Lass2 antibody (orb109378)

|                            |  |
|----------------------------|--|
| <b>Description</b>         | Rabbit polyclonal to Lass2   |
| <b>Species/Host</b>        | Rabbit   |
| <b>Reactivity</b>          | Human  |
| <b>Conjugation</b>         | Unconjugated   |
| <b>Tested Applications</b> | WB   |
| <b>Immunogen</b>           | Synthetic peptide derived from human Lass2 protein   |
| <b>Preservatives</b>       | Provided as solution in phosphate buffered saline with 0.08% sodium azide  |
| <b>Form/Appearance</b>     | Provided as solution in phosphate buffered saline with 0.08% sodium azide  |
| <b>Concentration</b>       | See vial for concentration   |
| <b>Storage</b>             | Product should be stored at -20°C. Aliquot to avoid freeze/thaw cycles   |
| <b>Note</b>                | For research use only  |
| <b>Application notes</b>   | Antibody can be used for Western blotting (1-5 µg/ml starting dilution). Optimal concentration should be evaluated by serial dilutions.                  |
| <b>Uniprot ID</b>          | <a href="#">Q96G23</a>   |
| <b>Hazard Information</b>  | This product is intended FOR RESEARCH USE ONLY, and FOR TESTS IN VITRO, not for use in diagnostic or therapeutic procedures involving humans or animals. |
| <b>Expiration Date</b>     | 12 months from date of receipt.  |



Western blot analysis of human placenta ...