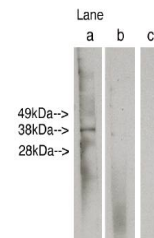


Product Datasheet

Lass6 antibody (orb109374)

Description	Rabbit polyclonal to Lass6
Species/Host	Rabbit
Reactivity	Human
Conjugation	Unconjugated
Tested Applications	WB
Immunogen	Synthetic peptide derived from human Lass6 protein
Preservatives	Provided as a solution in Tris buffered saline with 0.08% sodium azide, 10mM MgCl ₂ , 10mM ammonium sulfate, and 0.2% lactose.
Form/Appearance	Provided as a solution in Tris buffered saline with 0.08% sodium azide, 10mM MgCl ₂ , 10mM ammonium sulfate, and 0.2% lactose.
Concentration	Lot specific, see vial
Storage	Product should be stored at -20°C. Aliquot to avoid freeze/thaw cycles
Note	For research use only
Application notes	Antibody can be used for Western blotting (1:400 starting dilution). Optimal concentration should be evaluated by serial dilutions.
Uniprot ID	Q6ZMG9
Hazard Information	This product is intended FOR RESEARCH USE ONLY, and FOR TESTS IN VITRO, not for use in diagnostic or therapeutic procedures involving humans or animals.
Expiration Date	12 months from date of receipt.



Western blot analysis of human Duodenum ...