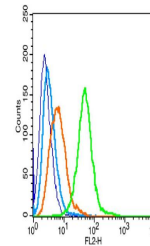


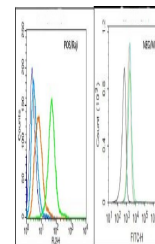
Product Datasheet

ENPP33 antibody (orb10930)

Description	ENPP33 antibody
Species/Host	Rabbit
Reactivity	Human, Rat
Conjugation	Unconjugated
Tested Applications	FC
Immunogen	KLH conjugated synthetic peptide derived from human ENPP3 (40-140/875 aa)
Target	ENPP3
Preservatives	0.01M TBS(pH7.4) with 1% rAlbumin, 0.03% Proclin300 and 50% Glycerol.
Form/Appearance	Liquid
Concentration	1mg/ml
Storage	Shipped at 4°C. Store at -20 °C for one year. Avoid repeated freeze/thaw cycles.
Note	For research use only
Isotype	IgG
Clonality	Polyclonal
MW	100 kDa
Uniprot ID	O14638
Dilution Range	Flow-Cyt=2µg /test, IHC-P=1:100-500, IHC-F=1:100-500, IF=1:200-800, ELISA=1:5000-10000
Expiration Date	12 months from date of receipt.



Flow cytometric analysis of Raji (blue),...



Flow cytometric analysis of Raji □ Posit...