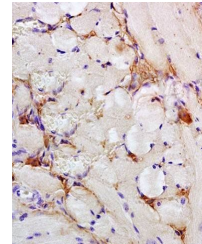


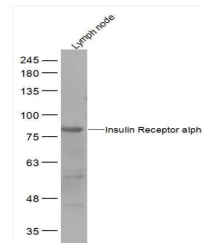
Product Datasheet

Insulin Receptor alpha antibody (orb10923)

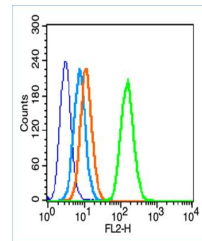
Description	Insulin Receptor alpha antibody
Species/Host	Rabbit
Reactivity	Human, Rat
Conjugation	Unconjugated
Tested Applications	FC, IHC-P, WB
Immunogen	KLH conjugated synthetic peptide derived from human Insulin Receptor alpha (701-760/1382 aa)
Target	Insulin Receptor alpha
Preservatives	0.01M TBS(pH7.4) with 1% rAlbumin, 0.03% Proclin300 and 50% Glycerol.
Form/Appearance	Liquid
Concentration	1mg/ml
Storage	Shipped at 4°C. Store at -20 °C for one year. Avoid repeated freeze/thaw cycles.
Note	For research use only
Isotype	IgG
Clonality	Polyclonal
MW	80/152 kDa
CAS Number	3
Uniprot ID	P06213
Dilution Range	WB=1:500-2000, IHC-P=1:100-500, Flow-Cyt=0.2µg/Test, IHC-F=1:100-500, IF=1:100-500, ELISA=1:5000-10000
Expiration Date	12 months from date of receipt.



Immunohistochemical analysis of formali...



Western blot analysis of Rat Lymph node ...



Flow cytometric analysis of HL60 cell us...