
Product Datasheet

Neuron-Specific Enolase antibody (orb109169)

Description

Mouse monoclonal to Neuron-Specific Enolase

Species/Host

Mouse

Reactivity

Human

Conjugation

Unconjugated

Tested Applications

ELISA, IHC, WB

Immunogen

Hybridoma produced by the fusion of splenocytes from BALB/c mice immunized with a synthetic peptide derived from the human NSE protein and mouse myeloma Ag8563 cells. Sequence common in human, mouse and chicken.

Preservatives

Provided as solution in phosphate buffered saline with 0.08% sodium azide

Form/Appearance

Provided as solution in phosphate buffered saline with 0.08% sodium azide

Concentration

See vial for concentration

Storage

Product should be stored at -20°C. Aliquot to avoid freeze/thaw cycles

Note

For research use only

Application notes

Antibody can be used for Western blotting (1-2 µg/ml) and immunohistochemistry on formalin-fixed, paraffin-embedded tissue sections (1-5 µg/ml). Optimal concentration should be evaluated by serial dilutions.

Isotype

IgG1

Clonality

Monoclonal

Uniprot ID

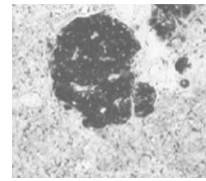
P09104

Hazard Information

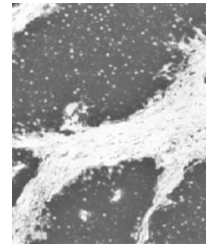
This product is intended FOR RESEARCH USE ONLY, and FOR TESTS IN VITRO, not for use in diagnostic or therapeutic procedures involving humans or animals.

Expiration Date

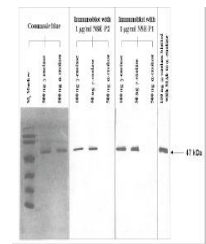
12 months from date of receipt.



Immunohistochemical staining of normal p...



Immunohistochemical staining of small bo...



Western blot analysis of α and γ enola...