

---

## Product Datasheet

### T-Complex Protein 1 antibody (orb109168)

**Description**

Mouse monoclonal to T-Complex Protein 1

**Species/Host**

Mouse

**Reactivity**

Frog, Human, Rat

**Conjugation**

Unconjugated

**Tested**

IHC, WB

**Applications**
**Immunogen**

Hybridoma produced by the fusion of splenocytes from BALB/c mice immunized with a synthetic peptide derived from the C-terminal of the TCP-1 protein and mouse myeloma Ag8563 cells. Sequence common in human, frog, mouse, rat

**Preservatives**

Provided as solution in phosphate buffered saline with 0.08% sodium azide

**Form/Appearance**

Provided as solution in phosphate buffered saline with 0.08% sodium azide

**Concentration**

See vial for concentration

**Storage**

Product should be stored at -20°C. Aliquot to avoid freeze/thaw cycles

**Note**

For research use only

**Application notes**

Antibody can be used for Western blotting (1-2 µg/ml) and immunohistochemistry on formalin-fixed, paraffin-embedded tissue sections (1-5 µg/ml). Optimal concentration should be evaluated by serial dilutions.

**Isotype**

IgG2a

**Clonality**

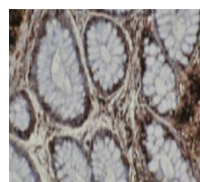
Monoclonal

**Uniprot ID**
**P47207**
**Hazard**
**Information**

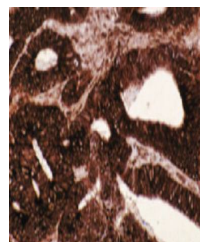
This product is intended FOR RESEARCH USE ONLY, and FOR TESTS IN VITRO, not for use in diagnostic or therapeutic procedures involving humans or animals.

**Expiration Date**

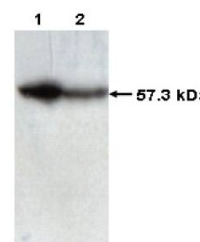
12 months from date of receipt.



Immunohistochemical staining of normal c...



Immunohistochemical staining of cancerou...



Western blot analysis of Calu6 (1) and H...