

## Product Datasheet

### Serine Palmitoyltransferase 1 antibody (orb109166)

**Description**

Rabbit polyclonal to Serine


**Species/Host**

Rabbit

**Reactivity**

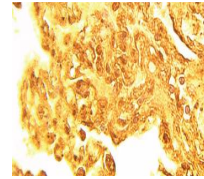
Human

**Conjugation**

Unconjugated

**Tested Applications**

IHC, WB



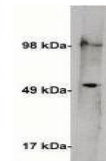
Immunohistochemical staining of human lu...

**Immunogen**

Synthetic peptide derived from the human serine palmitoyltransferase enzyme.

**Preservatives**

Provided as ligand affinity purified antibody in phosphate buffered saline with 0.08% sodium azide



Western blot analysis of human kidney ly...

**Form/Appearance**

Provided as ligand affinity purified antibody in phosphate buffered saline with 0.08% sodium azide

**Concentration**

See vial for concentration

**Storage**

Product should be stored at -20°C. Aliquot to avoid freeze/thaw cycles

**Note**

For research use only

**Application notes**

Antibody can be used for Western blotting (1-5 µg/ml) and immunohistochemistry (5-10 µg/ml). Optimal concentration should be evaluated by serial dilutions.

**Isotype**

IgG

**Uniprot ID**
[O15269](https://www.uniprot.org/entry/O15269)
**Hazard Information**

This product is intended FOR RESEARCH USE ONLY, and FOR TESTS IN VITRO, not for use in diagnostic or therapeutic procedures involving humans or animals.

**Expiration Date**

12 months from date of receipt.