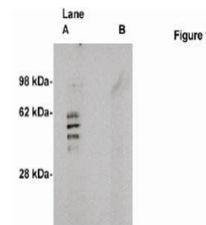


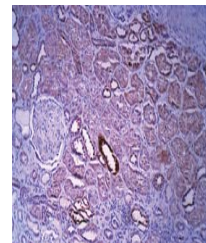
Product Datasheet

Sphingomyelin Synthase 2 antibody (orb109162)

Description	Rabbit polyclonal to Sphingomyelin Synthase 2
Species/Host	Rabbit
Reactivity	Human
Conjugation	Unconjugated
Tested Applications	WB
Immunogen	Synthetic peptide derived from the human sphingomyelin synthase 2 protein.
Preservatives	Purified IgG in phosphate buffered saline, pH 7.4
Form/Appearance	Purified IgG in phosphate buffered saline, pH 7.4
Concentration	Lot specific, see vial
Storage	Product should be stored at -20°C. Aliquot to avoid freeze/thaw cycles
Note	For research use only
Application notes	Antibod can be used for Western blotting (1:400 starting dilution) and immunohistochemistry (1:400 starting dilution) Optimal concentration should be evaluated by serial dilutions.
Isotype	IgG
Uniprot ID	Q8NHU3
Hazard Information	This product is intended FOR RESEARCH USE ONLY, and FOR TESTS IN VITRO, not for use in diagnostic or therapeutic procedures involving humans or animals.
Expiration Date	12 months from date of receipt.



Western blot analysis of human brain lys...



Immunohistochemical staining of Human ki...